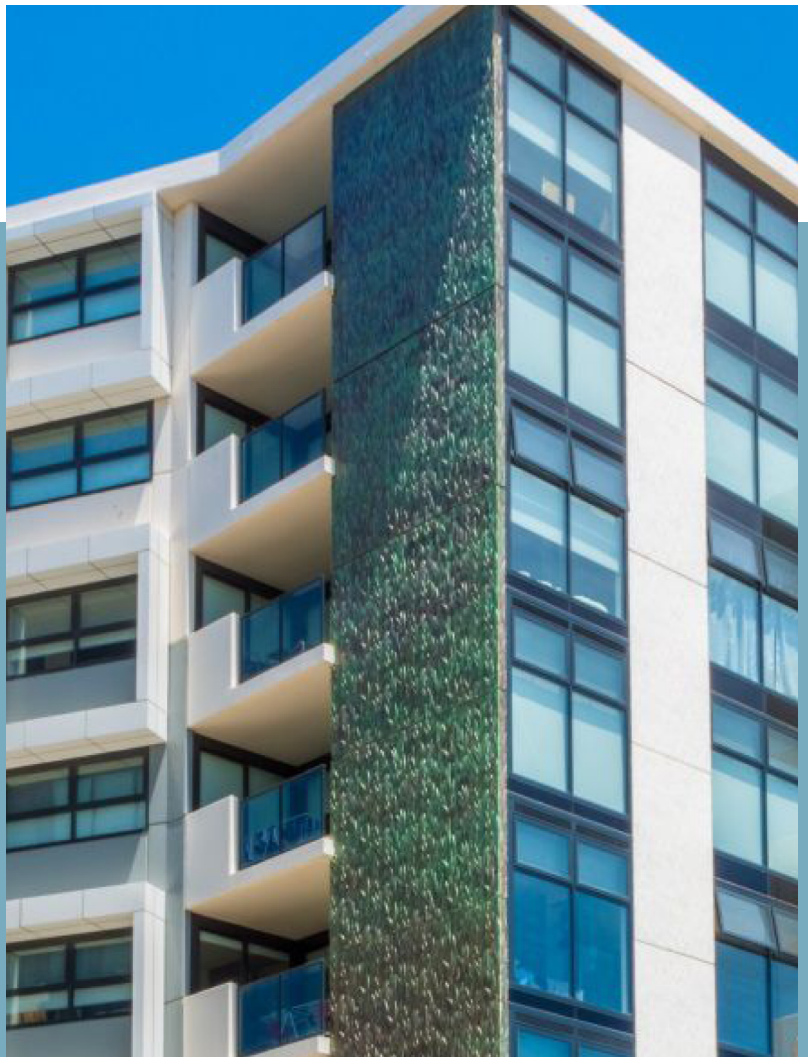


HORIZON APARTMENTS

- COBURG, VICTORIA, AUSTRALIA

WWW.NAWKAW.COM



Nawkaw[®]
ARCHITECTURAL FINISHES INSPIRED BY ART & SCIENCE



THE CHALLENGE

How do you preserve the cultural history of a structure with no further use?

This was the question posed to PRO-ARK Architects as they developed a plan of action to redevelop the site of Melbourne's defunct Pentridge Prison. The 150-year-old former prison site held a dark and uneasy place in the hearts and minds of Melbourne locals, but the bluestone walls had dominated the region for so long, complete demolition was out of the question for this historic site.

From the ashes of a former prison site, a new urban village was to rise alongside the existing structure and breathe new life into a derelict area. However, with all eyes on the burgeoning development, project managers needed a cost-effective way to create a stunning, modern residential project.

Designers sought to blend naturalistic design elements with the material benefits of concrete facades—a microcosm of the balancing acts elsewhere on the project.

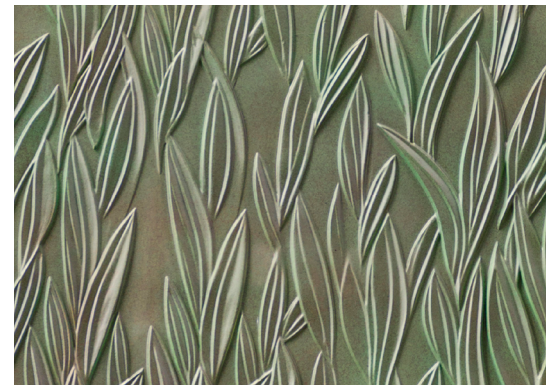
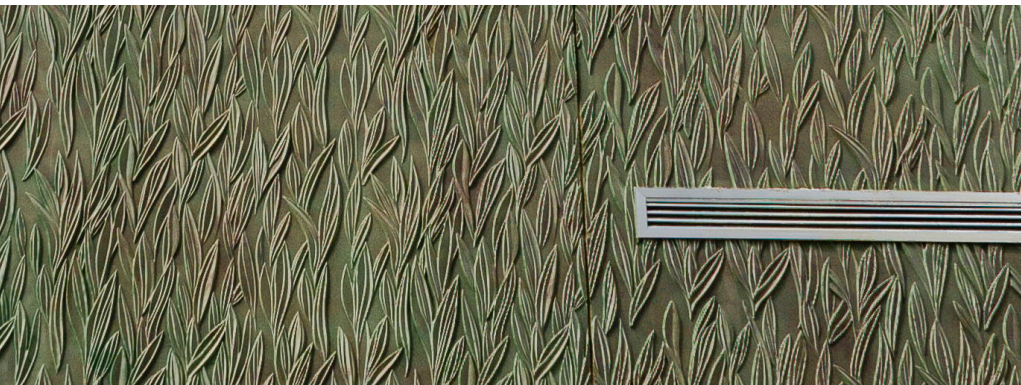
THE SOLUTION

To meet the needs of PRO-ARK Architects and the Greater Melbourne area, Nawkaw Australia partnered with formliner manufacturer Reckli to create unique façade elements designed to elevate the new housing development.

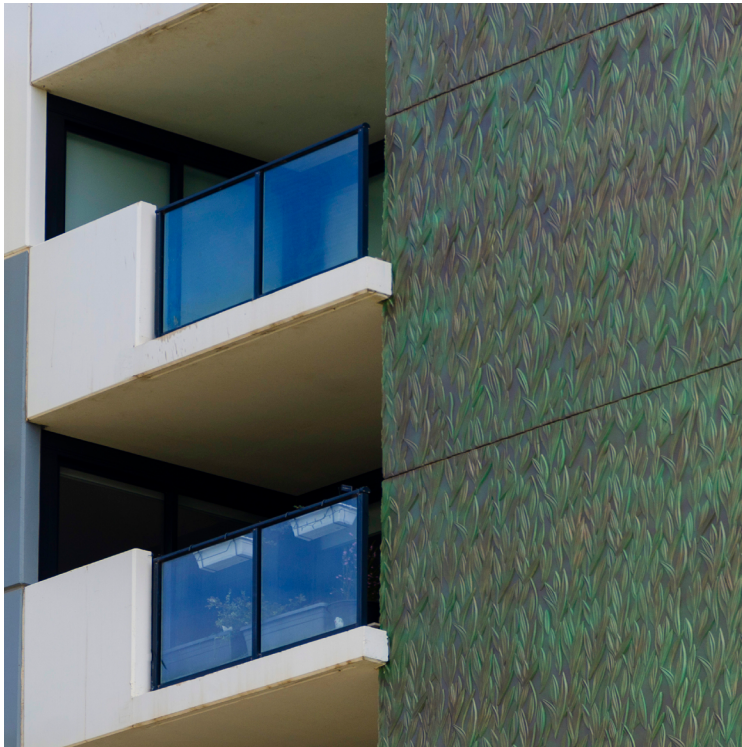
First, Reckli formliners imprinted a natural texture reminiscent of blades of grass into concrete panelling, before Nawkaw Australia stain technicians got to work. Grey concrete transformed into a beautiful, weathered patina aesthetic using stain technology that penetrates the concrete surface and forms strong bonds with the underlying substrate.

Nawkaw Australia's staining and colour system imbues colour that does not peel, chip or fade—further contributing to the sustainability initiatives of project managers. The result is a beautiful, rich, textured surface only made possible by expert stain technicians, acrylic and mineral stain technologies, and formlined concrete surfaces.

The patina architectural panels stand beautiful today—emblematic of the strength and resilience of superior concrete design.



WWW.NAWKAW.COM



Horizon Apartments - Coburg, Victoria, Australia





WWW.NAWKAW.COM