

ARCHITECTURAL FINISHES AND COLOR SOLUTIONS FOR CONCRETE AND MASONRY

AIA CES COURSE #NAW AIA 2020A

Nawkaw Corporation is a registered provider with The American Institute of Architects Continuing Education Systems. Credits earned on completion of this program will be reported to CES Records for AIA members. Certificates of Completion for non-AIA members are available on request.

Our presentation usually lasts between 45 – 60 minutes. Please grant us access 30 minutes before to allow setting up equipment as necessary. Nawkaw is happy to reimburse you with a luncheon for all participants attending the course.

This seminar introduces mineral silicate stains and elaborates on how they can help to solve common issues encountered by the concrete and masonry industry. The stains do not only eliminate blemishes on buildings and enhance the decorative aspect of your projects; they are also cost-effective and help saving money in the long run.

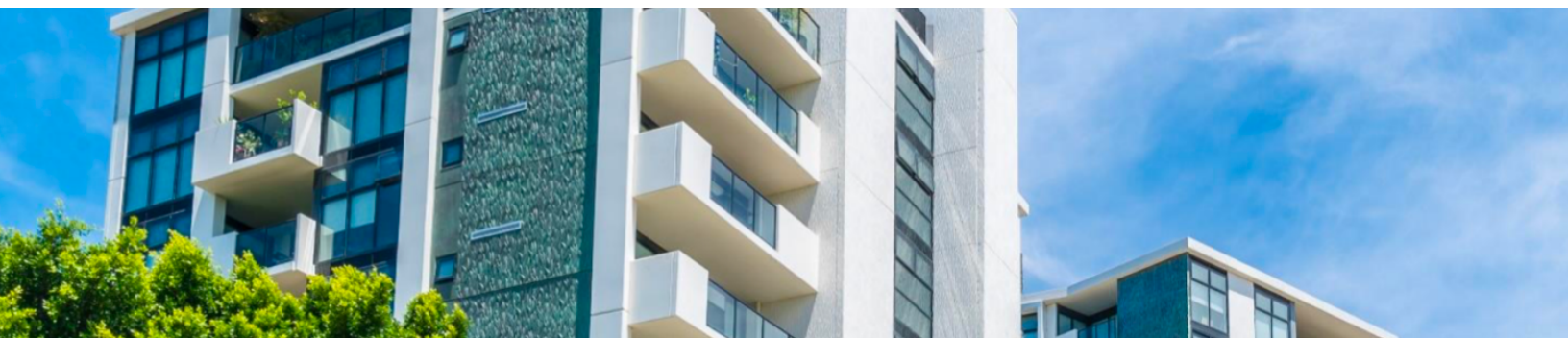
TABLE OF CONTENT

COLOR SOLUTIONS & ARCHITECTURAL FINISHES

1. Blending additions and remodeling with stain to save money and resources.
2. Recognizing stain as sustainable solution.
3. Using stain as cost-effective, long-term color solution for concrete and masonry.
4. Enhancing communities with color.

Questions? We are happy to help you!
Contact us or schedule a seminar today!
[1-866-NAWKAW](tel:1-866-NAWKAW) or info@nawkaw.com

www.nawkaw.com



Color Matching

Matching the color to additions or existing brick and concrete is often required after renovations and repairs are completed. Stain is the ideal solution to match the color to the surface and has many advantages compared to paint.

Sustainability

Stain is a long-term and environmentally-friendly solution. Quality stains are water-based, low in odor, contain little to zero VOC, can comprise up to 20% of recycled material and may qualify your project for LEED Credits.

Cost Efficiency

The longevity of concrete and masonry can be significantly improved by using stains. The decorative details of your building will last longer, and maintenance costs are limited to a minimum when applied correctly.

Communities

By enhancing the looks of the buildings that surround us, we improve the quality of life within our communities while enjoying the beautiful sight. Living or working in a beautiful building makes people feel more comfortable.