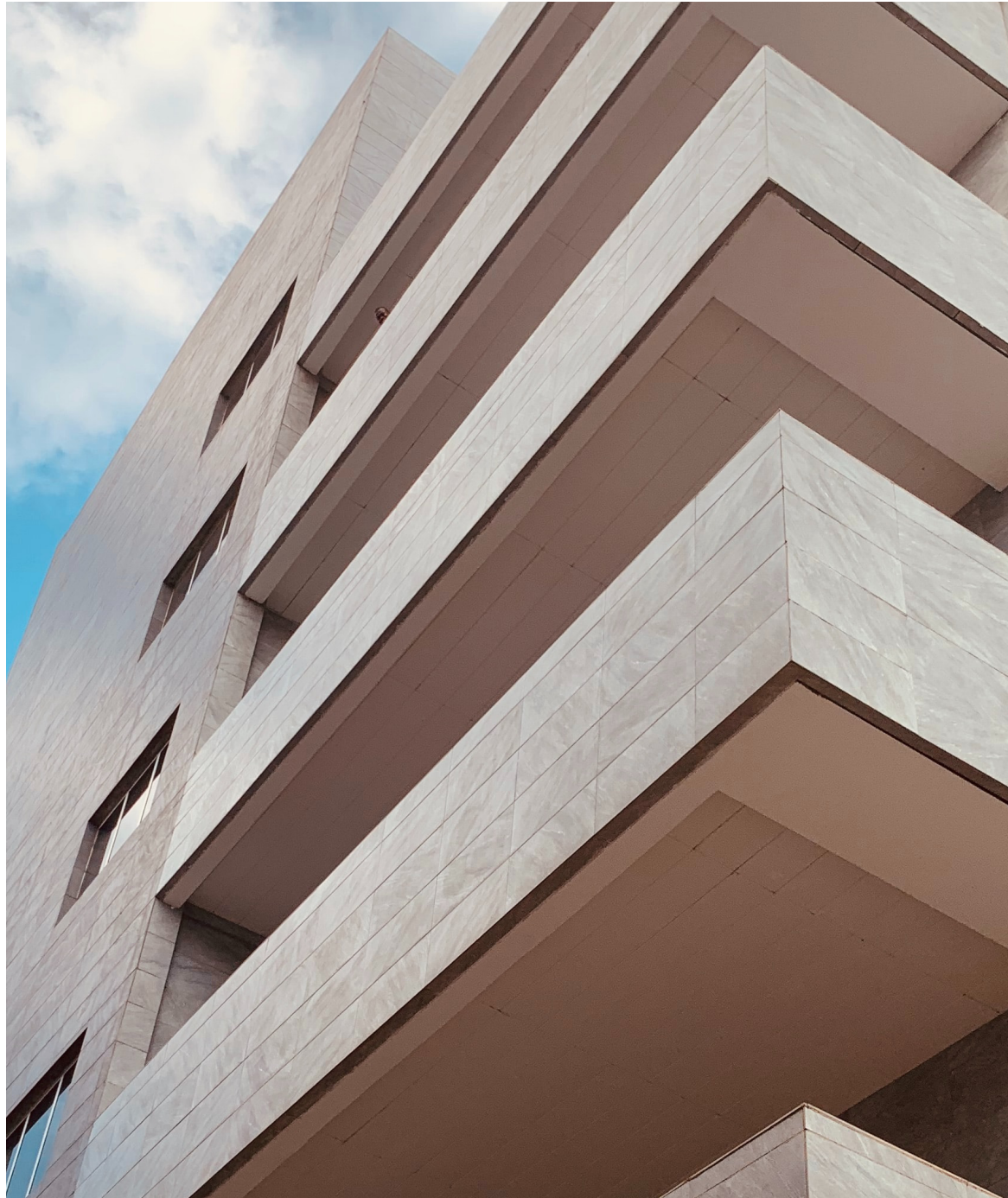


NawThinz™

Technical Data Sheet

WWW.NAWKAW.COM

Nawkaw®
ARCHITECTURAL FINISHES INSPIRED BY ART & SCIENCE



NawThinz™

NawThinz products are mineral silicate-based diluents and primers for NawTone-K mineral stain. As diluents they are used to reduce the pigment loading of NawTone-K, allowing NawTone-K to become a semi-transparent stain. When used as a primer, **NawThinz** products enhance the physical properties of the treated surface. **NawThinz-C** is specifically designed for Concrete surfaces, while **NawThinz-M** is specifically designed for Masonry (brick, block, stone) surfaces. **NawThinz** products will stabilize soft, porous masonry and concrete, creating a consistent absorbency rate across the surface.

Because **NawThinz** chemically binds with concrete, it is ideal for use on precast and tilt-up projects.

Characteristics:

UV RESISTANT	NONTOXIC	WEATHER RESISTANT
SOLVENT-FREE	ECO-FRIENDLY	WATER-BASED
PENETRATING	ZERO VOC	DURABLE



Environmental & Safety Concerns

NawThinz is water-based, nonflammable, nonhazardous and has **zero VOC** content. The use of this product may help your project to qualify for L.E.E.D credits.

Typical Specifications:

- **Density:** 1.05 g/cm³
- **pH:** ~11
- **Nonflammable**
- **VOC:** (ASTM D6886) 0 g/L
- **Water Vapor-permeable**
- **UV & Weather resistant**
- **Application Temperature:** 41° - 110°F (5° - 43°C)
- **Dry Time for Reapplication (if required):**
12 hrs concrete / 24 hrs masonry
- **Shelf Life:** 12 months in factory sealed container

Product Properties

- Penetrating
- Nonflammable
- Nontoxic
- Water-based
- Solvent-free
- Vapor-permeable
- Non-film-forming
- Zero VOC
- Water washup

Color Selection

NawThinz is colorless and used to dilute NawTone-K. Various finishes can be achieved by adjusting the ratio of NawThinz to NawTone-K, and using different application techniques.

*Applications in temperatures below 40°F and when temperatures drop below 40°F within 8 hours of application must be done by Nawkaw.

Surface Preparation

Prior to application ensure that substrate is clean, dry and free of dust. Remove loose and unstable material as a sound surface is required for external applications. Be sure to check for any presence of mold release residue from concrete forms. If present, remove according to manufacturer's guidelines.

Substrates that have been treated with acid/chemical wash must be neutralized prior to application.

Alkali or efflorescence should be treated with proper neutralizing compounds as recommended by manufacturers before application can begin.

Application

NawThinz can be applied by brush, roller, sponge and spray equipment. The product should be thoroughly mixed by stirring before use. The choice of application technique depends on the desired color and finish one wishes to achieve. For translucent finishes, the **NawThinz** to NawTone-K ratio will be customized depending on the level of translucency required for the project. This may involve varying the number of applications required.

When NawTone-K has been diluted with **NawThinz**, be sure to keep it well stirred. ONLY DILUTE WITH NAWTHINZ. It is important to maintain a wet edge at all times, and work to a natural break line.

Limitations

Not suitable for application on synthetic surfaces such as silicone, urethane, epoxy or plastic. This coating cures to a hard finish and is not recommended for use on caulking joints.

Coverage

Approximately 500-800 sq ft/gal (10-20 m²/l). Actual area covered depends on the porosity of the substrate and the application method(s) used.

Cleaning of Application Equipment

Cleanup of equipment with water should be completed before the products have been allowed to dry. Spills or overspray should be cleaned with water and not allowed to dry.

The User of the product assumes all liability for product's use except in situations involving a manufacture's defect. This technical information is offered as advice based on knowledge and practical experience and does not constitute a warranty. Before application, the User shall determine the suitability of the product for its intended use. User should also ensure that the product is thoroughly mixed prior to application as the product may have settled during shipment or storage. Furthermore, it is recommended that the User test the product on a sample area before use. Nawkaw retains the right to make modifications as part of the product's development or improvement of their application; it is the User's duty to ensure they are aware of any such changes. This edition supersedes all earlier editions.

Safety

- Protect eyes and skin from contact with NawThinz.
- Do not swallow.
- Keep away from children.



NOTE:
See manufacturer's SDS sheet:
www.nawkaw.com/nawthinz